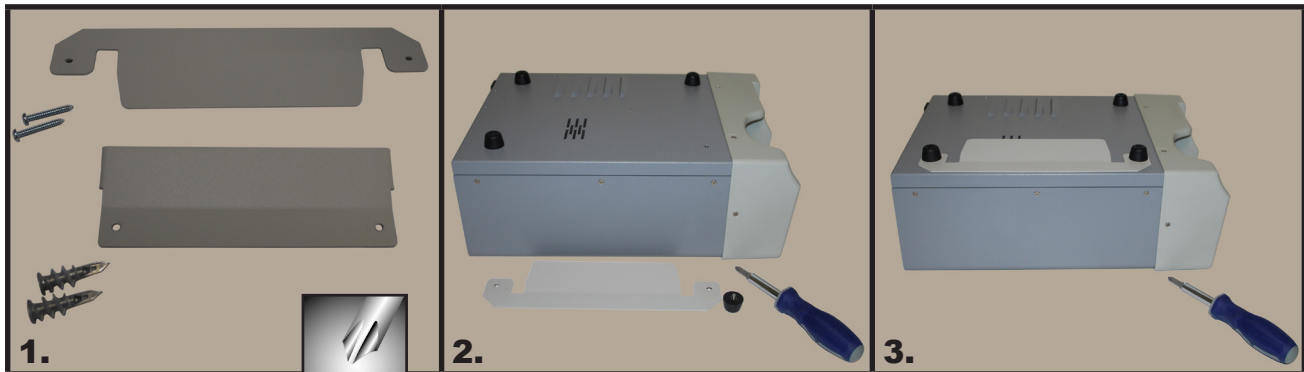


Buffalo Filter ViroVac™ Wall Mount Kit

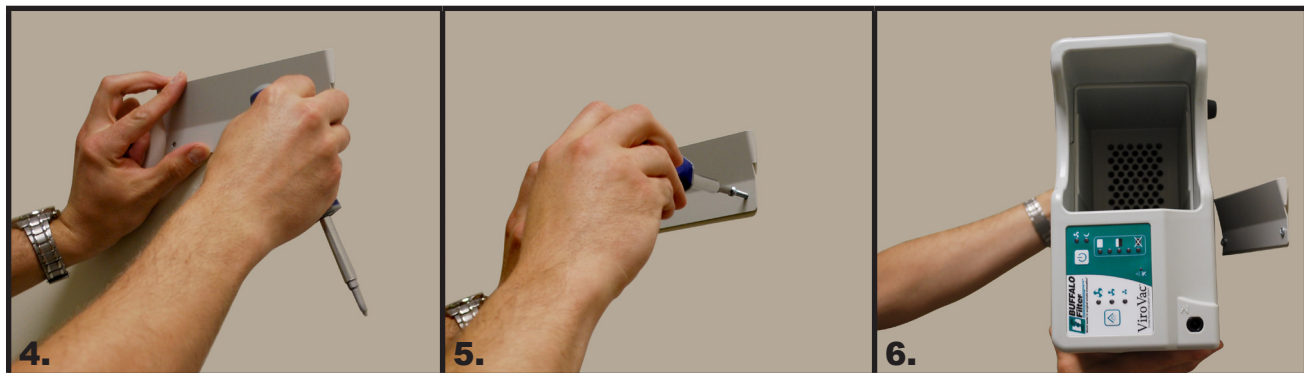
Assembly Instructions



1. The ViroVac™ Wall mount kit comes with a ViroVac base plate, wall mount plate, two screws, and two tri-wall anchors. Remove all packaging. You will need a Phillips Head screwdriver.

2. Carefully remove two of the rubber feet on one side of the ViroVac.

3. Line the ViroVac baseplate up with the exposed screw holes. The raised lip of the plate should be pointing towards the center of the unit's underside. Replace the screws (with feet attached) to their original position, securing the feet and plate.



4. The surface mounting plate can be attached to any flat, sturdy surface that can withstand a weight of 30+ lbs. (14+ kg). The raised plate should face upwards to accommodate the ViroVac base plate. Place the surface mounting plate against the wall where the ViroVac will be mounted.

5. Mark the places where you will secure the plate. Using the marks made as a guide, fasten the tri-wall anchors. Mount the wall bracket onto the wall using the tri-wall anchors as guides. To secure the plate, attach the screws securely into the anchors.

6. Turn the ViroVac so that the base plate aligns with surface mounting plate. To secure the ViroVac, place it into the surface mounting plate.

